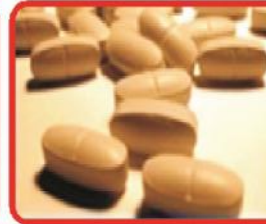
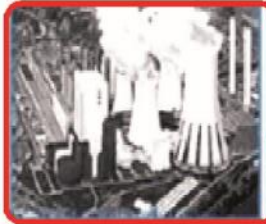




AQUA INTERNATIONAL

Unit of Refrigeration Product

Drinking Water Cooler



Build with New Transformation



High Quality Cold Water for Domestic, Commercial & Industrial Consumption

Key Features of Aqua International healthy Drinking Water Cooler

- Faster Cooling
- Ergonomically designed for greater safety & operational convenience
- Low power consumption due to superior quality grooved copper tubes in heat exchanger and a high efficiency compressor
- Blue fins on condenser coil gives the cooler a longer life
- Sagged stainless / galvanized steel body for longer product life
- Safe drinking water due to high quality stainless steel tank, food grade water piping, float valve and other components which come in contact with drinking water
- no plumbing required as the water inlet hosepipe and overflow pipes are provided with the unit making installation a matter of a few minutes.
- Specially designed float valves made of food grade plastic, are not only safe but also withstand high inlet water head pressure very easily
- Adjustable pedestals made of highly non-corrosive and strong material which last longer in extreme atmospheric conditions

AQUA INTERNATIONAL WATER COOLERS - TECHNICAL SPECIFICATIONS

PARTICULARS	UNIT	MODEL NAME							
		SS 2020	SS 2040	SS 4040	SS 4080	SS 60120	SS 150150	SS 200400	SS 400400
Cooling Capacity									
At Rated Conditions	Ltr / hr	20	20	40	40	60	150	200	400
At 10° C temperature	Ltr / hr	35	35	65	65	100	245	400	400
Glasses / hr at rated	No	100	100	200	200	300	750	1000	2000
Storage Capacity	Ltr	20	40	40	80	120	150	400	400
Power Supply		230 V. 50 hZ, 1 Phase							
Rated Current	Amp.	2	2	2.5	2.5	3.6	7	8	11
Power Input	Watt.	390	390	450	450	775	1550	2000	2500
MATERIAL SPECIFICATION									
Chiller Tank		Stainless Steel (SS 304) THK - 0.5 mm							
SHEET METAL PANELS									
Top Lid		Stainless Steel (SS 202 / 204 CU) THK - 0.5 mm							
Front Panel Top / Bottom		Stainless Steel (SS 202 / 204 CU) THK - 0.5 mm							
Rear Panel Top / Bottom		Stainless Steel (SS 202 / 204 CU) THK - 0.5 mm							
Side Panel both Side		Stainless Steel (SS 202 / 204 CU) THK - 0.5 mm							
Base plate / inner angle		GPSP SHEET (POWDER COATED)THK - 1.5 MM							
Mask		Stainless Steel (SS 202 / 204 CU) THK - 0.5 mm							
Drip Tray		Stainless Steel (SS 304) THK - 0.5 mm							
Bubble Top Attachment		Yes	Yes	Yes	NO/ Optional	NO/ Optional	NO/ Optional	NO/ Optional	NO/ Optional
Faucet Material		Brass (Cr Plated)							
No. of Faucets - Cold Water	Nos	1	1	1	2	2	2	4	4
Condenser Tubing Used In Evaporator		Inner Grooved Copper and Hydrophilic Aluminum Fins (Blue)							
Condenser Tubing		Grooved copper							
Legs		PP							
Water inlet hose pipe		Provided (Food Grade)							
Drain pipe		Provided							
Over flow pipe		Provided							
Motor Make		Micro /Marathon (GE motors)							
Compressor / Make		Emerson 419, 421 / LG - MA 53 / MA - 42	Emerson 419, 421 / LG - MA 53 / MA - 42	Emerson 434, 443, 444/ LG - MA 88	Emerson 434, 443, 444/ LG - MA 88	Emerson - 461	Emerson - 513.511	Emerson - 513 /CR 22	Emerson - CR 22, CR 30
Compressor / Refrigerant		Reciprocating R - 134a	Reciprocating R - 134a	Reciprocating R - 134a R - 22	Reciprocating R - 134a R - 22	Reciprocating R - 134a R - 22	Reciprocating R - 134a R - 22	Reciprocating R - 134a R - 22	Reciprocating R - 134a R - 22
Dimension	mm	370x 370x 1000	370x 370x 1185	370x 370x 1185	590x490 x 1200	700x540 x 1160	700x 540x 1320	1160x700 x1400	1160x700 x1400
Net Weight	Kg.	35	37	45	50	57	72	127	145

Note : - As we are constantly upgrading our product. All specifications, descriptions and illustrations are subject to change without any prior notification.

AQUA INTERNATIONAL

Office : Plot No. 11, Sector - 91, Surya Nagar-II, Faridabad - 121013 (Haryana), India

Works : Village Tilpat, Near Surdas Mandir Faridabd (Haryana)

Ph. : +91 129 256 0087 (M) : +91 9871120662, 9278296434

E-mail : Info@aquainternational.co.in, aquainternational16@gmail.com

Website : www.aquainternational.co.in